

Dive into pure bliss with our electric geysers
where every bath feels like a luxurious retreat !



Elevate Your Comfort with Our Electric Water Geysers

Step into a world where comfort meets efficiency with our cutting-edge electric water geysers. In the hustle and bustle of modern life, a relaxing shower can be a sanctuary, a momentary escape from the chaos. Our geysers are designed to make this experience effortless, providing you with instant access to soothing hot water whenever you need it.

Engineered with precision, our electric geysers combine advanced heating technologies with energy-saving features. Experience the luxury of on-demand hot water without the hefty electricity bills. Our geysers are not only efficient but also environmentally friendly, helping you reduce your carbon footprint while enjoying unparalleled comfort.

Safety is paramount, and our geysers come equipped with state-of-the-art safety features, ensuring a worry-free bathing experience. From temperature control to automatic shut-off, we've taken every measure to protect you and your loved ones.

Sleek and stylish, our electric geysers are designed to complement any bathroom décor, adding a touch of elegance to your space. With durability and longevity in mind, our geysers are built to withstand the test of time, making them a reliable investment for your home.

Choose our electric water geysers today and transform your bathing routine into a luxurious retreat. Embrace the future of comfort and convenience with our superior quality geysers – where innovation meets relaxation!



LONGER WARRANTIES

- 7 YEARS WARRANTY ON INNER TANK.
- 2 YEARS WARRANTY ON PRODUCT

SAFETY & KEY FEATURES



FUTURISTIC DESIGN

Futuristic & Compact designed by the design expert with superior quality



5-STAR RATED PRODUCT

More stars gives more saving & reduced electricity bills



TEMPERATURE REGULATION SMART KNOB

Regulation smart knob helps regulate heating of water as per hot water need.



LEAK PROOF TANK

Polymer glass coating gives the tank extreme intensity and durability



PLATED HEATING ELEMENT

2 K.W. Nickel plated element for higher heating efficiency & longer life. It gives hot water 33% faster



ROTATIONAL TYPE THERMOSTAT & SAFETY CUTOUT

Thermostat ensure automatic temperature control & cutout gives extra safety from over heating.



PUF INSULATION

The high density and thick layer of PUF retention of internal heat & temperature, resulting in better energy efficiency & reduce electricity bill.



RUST PROOF BODY

Rust proof body prevent corrosion ensures long life for water heater.



SMART HEALTH PROTECTION



SUITABLE FOR HIGH RISE BUILDINGS



RUST & SHOCK PROOF BODY



For an Extraordinary
Bathing Experience

WATER GEYSERS

SHAPED TO FIT INTO EVERY HOME



STORM
series

pg. 1-2



TORRID
series

pg. 9-10



COMPACT
series

pg. 3-4



TORRID PLUS
series

pg. 11-12



BLAZE +
series

pg. 5-6



GALE
series

pg. 13-14

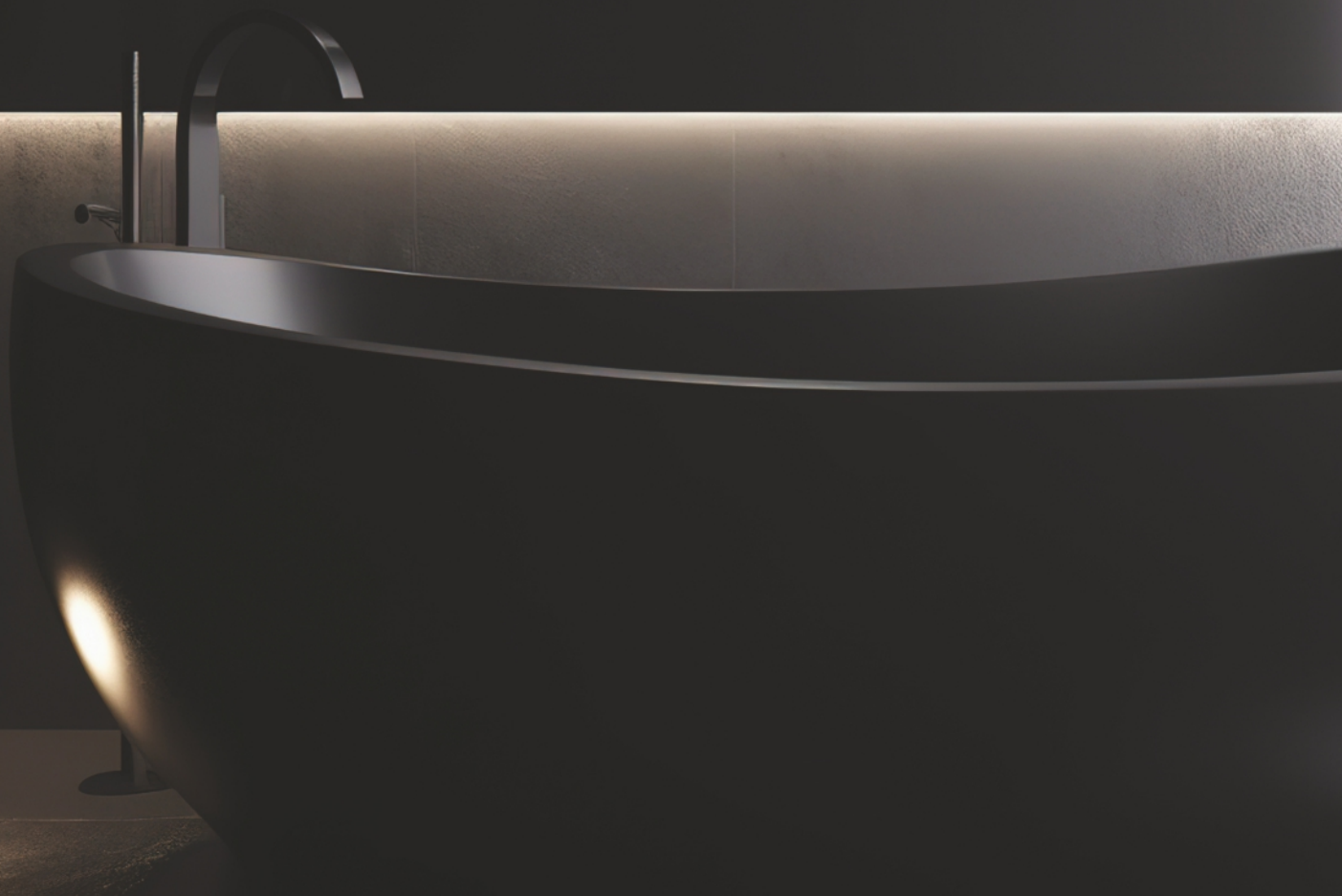


BLAZE
series

pg. 7-8



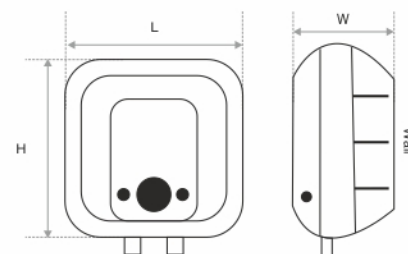
GOLD



STORM series

Capacity	Colour	Model Code	Wattage	Dimensions (in mm)
15 LITRES	Silver	SWH-SS-2015	2000 W	395 x 355 x 420
25 LITRES	Silver	SWH-SS-2025	2000 W	460 x 395 x 486
15 LITRES	Gold	SWH-SG-2015	2000 W	395 x 355 x 420
25 LITRES	Gold	SWH-SG-2025	2000 W	460 x 395 x 486
15 LITRES	Sea Green	SWH-SSG-2015	2000 W	395 x 355 x 420
25 LITRES	Sea Green	SWH-SSG-2025	2000 W	460 x 395 x 486

Heating : 2KW



SAFETY & KEY FEATURES



FUTURISTIC DESIGN

Futuristic & Compact designed by the design expert with superior quality



5-STAR RATED PRODUCT

More stars gives more saving & reduced electricity bills



LEAK PROOF TANK

Polymer glass coating gives the tank extreme intensity and durability



TEMPERATURE REGULATION SMART KNOB

Regulation smart knob helps regulate heating of water as per hot water need.



RUST PROOF ABS BODY

Rust proof body prevent corrosion. Ensures long life for water heater.



PLATED HEATING ELEMENT

2 K.W. Nickel plated element for higher heating efficiency & longer life. It gives hot water 33% faster



ROTATIONAL TYPE THERMOSTAT & SAFETY CUTOUT

Thermostat ensure automatic temperature control & cutout gives extra safety from over heating.



PUF INSULATION

The high density and thick layer of PUF retention of internal heat & temperature, resulting in better energy efficiency & reduce electricity bill.



SILVER



SEA GREEN

WARRANTY



On Inner Tank



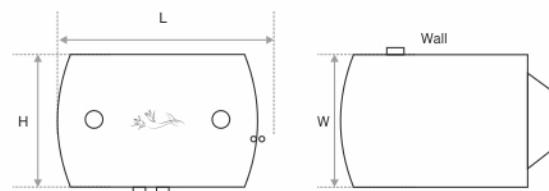
On Product





COMPACT series

Capacity	Model Code	Wattage
15 LITRES	SWH-HCW-3015	2000 W
25 LITRES	SWH-HCW-3025	2000 W
35 LITRES	SWH-HCW-3035	2000 W
50 LITRES	SWH-HCW-3050	2000 W



Heating : 2KW

SAFETY & KEY FEATURES



FUTURISTIC DESIGN

Futuristic & Compact designed by the design expert with superior quality



5-STAR RATED PRODUCT

More stars gives more saving & reduced electricity bills



LEAK PROOF TANK

Polymer glass coating gives the tank extreme intensity and durability



TEMPERATURE REGULATION SMART KNOB

Regulation smart knob helps regulate heating of water as per hot water need.



RUST PROOF BODY

Rust proof body prevent corrosion. Ensures long life for water heater.



PLATED HEATING ELEMENT

2 K.W. Nickel plated element for higher heating efficiency & longer life. It gives hot water 33% faster



ROTATIONAL TYPE THERMOSTAT & SAFETY CUTOUT

Thermostat ensure automatic temperature control & cutout gives extra safety from over heating.



PUF INSULATION

The high density and thick layer of PUF retention of internal heat & temperature, resulting in better energy efficiency & reduce electricity bill.



WARRANTY



On Inner Tank



On Product



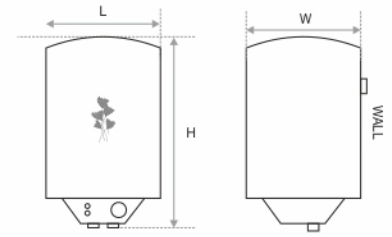
BLAZE +



BLAZE + series

Capacity	Model Code	Wattage	Dimensions (in mm)
10 LITRES	SWH-VWB+ -4010	2000 W	315 x 345 x 388
15 LITRES	SWH-VWB+ -4015	2000 W	315 x 345 x 468
25 LITRES	SWH-VWB+ -4025	2000 W	360 x 385 x 530
35 LITRES	SWH-VWB+ -4035	2000 W	400 x 430 x 575
50 LITRES	SWH-VWB+ -4050	2000 W	435 x 470 x 645

Heating : 2KW



SAFETY & KEY FEATURES



SMART DIGITAL DISPLAY

Smart and stylish digital display for set your desired temperature.



5-STAR RATED PRODUCT

More stars gives more saving & reduced electricity bills



LEAK PROOF TANK

Polymer glass coating gives the tank extreme intensity and durability



RUST PROOF BODY

Rust proof body prevent corrosion ensures long life for water heater.



PLATED HEATING ELEMENT

2 K.W. Nickel plated element for higher heating efficiency & longer life. It gives hot water 33% faster



FUTURISTIC DESIGN

Futuristic & Compact designed by the design expert with superior quality



PUF INSULATION

The high density and thick layer of PUF retention of internal heat & temperature, resulting in better energy efficiency & reduce electricity bill.



WARRANTY



On Inner Tank



On Product



BLAZE

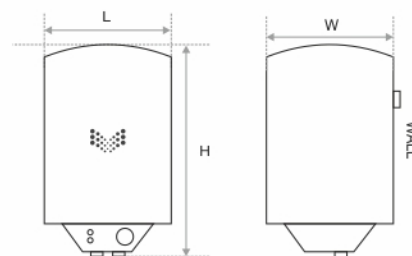


BLAZE BLACK



BLAZE series

Capacity	Colour Available		Model Code	Wattage	Dimensions (in mm)
10 LITRES	Black	White	SWH-VB-1010	2000 W	315 x 345 x 388
15 LITRES	Black	White	SWH-VB-1015	2000 W	315 x 345 x 468
25 LITRES	Black	White	SWH-VB-1025	2000 W	360 x 385 x 530
35 LITRES	Black	White	SWH-VB-1035	2000 W	400 x 430 x 575
50 LITRES	Black	White	SWH-VB-1050	2000 W	435 x 470 x 645



Heating : 2KW

SAFETY & KEY FEATURES



FUTURISTIC DESIGN

Futuristic & Compact designed by the design expert with superior quality



5-STAR RATED PRODUCT

More stars gives more saving & reduced electricity bills



LEAK PROOF TANK

Polymer glass coating gives the tank extreme intensity and durability



TEMPERATURE REGULATION SMART KNOB

Regulation smart knob helps regulate heating of water as per hot water need.



RUST PROOF ABS BODY

Rust proof body prevent corrosion. Ensures long life for water heater.



PLATED HEATING ELEMENT

2 K.W. Nickel plated element for higher heating efficiency & longer life. It gives hot water 33% faster



ROTATIONAL TYPE THERMOSTAT & SAFETY CUTOUT

Thermostat ensure automatic temperature control & cutout gives extra safety from over heating.



PUF INSULATION

The high density and thick layer of PUF retention of internal heat & temperature, resulting in better energy efficiency & reduce electricity bill.



BLAZE
WHITE

WARRANTY



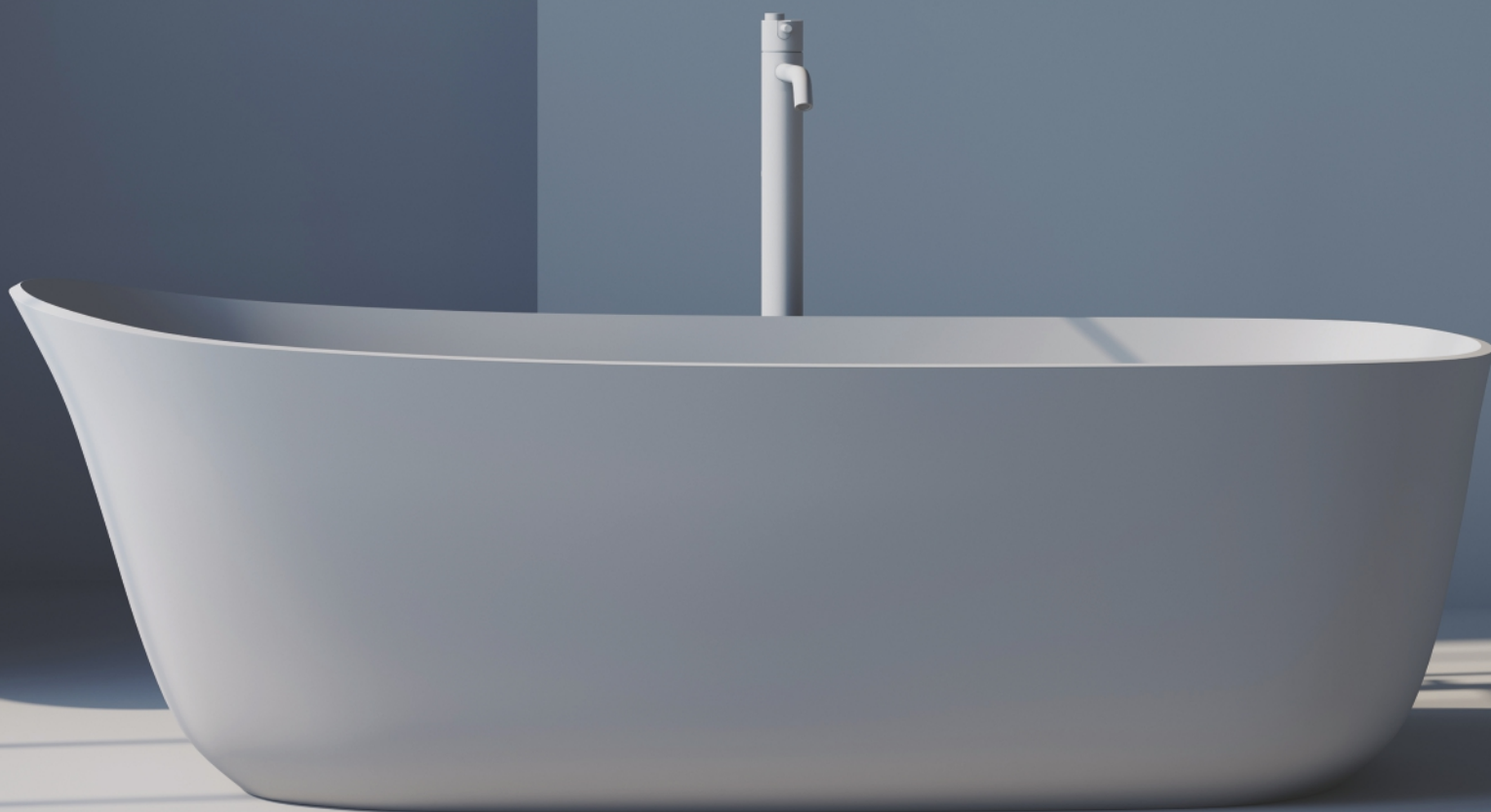
On Inner Tank



On Product



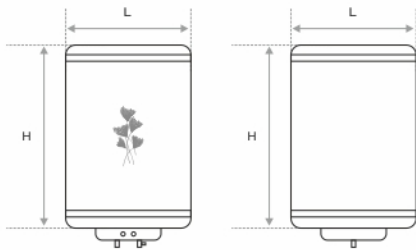
TORRID



TORRID series

Capacity	Model Code	Wattage	Dimensions (in mm)
6 LITRES	SWH-VTW-5006	2000 W	260 x 275 x 400
10 LITRES	SWH-VTW-5010	2000 W	260 x 275 x 460
15 LITRES	SWH-VTW-5015	2000 W	320 x 335 x 510
25 LITRES	SWH-VTW-5025	2000 W	360 x 375 x 550
35 LITRES	SWH-VTW-5035	2000 W	385 x 400 x 595
50 LITRES	SWH-VTW-5050	2000 W	435 x 450 x 630

Heating : 2KW



SAFETY & KEY FEATURES



FUTURISTIC DESIGN

Futuristic & Compact designed by the design expert with superior quality



RUST PROOF BODY

Rust proof body prevent corrosion ensures long life for water heater.



AUTOMATIC TEMPERATURE CONTROLLER

Thermostat ensure automatic temperature control & gives perfect hot water.



ANTI SYPHONING SYSTEM

Avoid back flow of hot water in cold water piping



SUITABLE FOR HIGH RISE BUILDING

Maximum Pressure rating is 6.5, which is suitable for high rise building.



ANTI RUST 304 TANK

High grade stainless steel tank is used in the water heater, which will provide protection to our geyser from rust for a long time.



WARRANTY



On Inner Tank



On Product

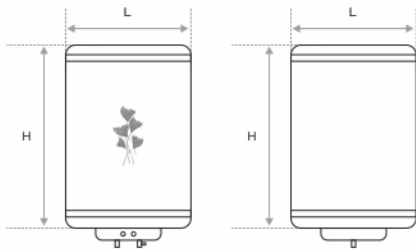




TORRID PLUS series

Capacity	Model Code	Wattage	Dimensions (in mm)
6 LITRES	SWH-VGT+ -5006	2000 W	260 x 275 x 400
10 LITRES	SWH-VGT+ -5010	2000 W	260 x 275 x 460
15 LITRES	SWH-VGT+ -5015	2000 W	320 x 335 x 510
25 LITRES	SWH-VGT+ -5025	2000 W	360 x 375 x 550

Heating : 2KW



SAFETY & KEY FEATURES



FUTURISTIC DESIGN

Futuristic & Compact designed by the design expert with superior quality



RUST PROOF BODY

Rust proof body prevent corrosion ensures long life for water heater.



AUTOMATIC TEMPERATURE CONTROLLER

Thermostat ensure automatic temperature control & gives perfect hot water.



ANTI SYPHONING SYSTEM

Avoid back flow of hot water in cold water piping



SUITABLE FOR HIGH RISE BUILDING

Maximum Pressure rating is 6.5, which is suitable for high rise building.



ANTI RUST 304 TANK

High grade stainless steel tank is used in the water heater, which will provide protection to our geyser from rust for a long time.



WARRANTY



On Inner Tank



On Product



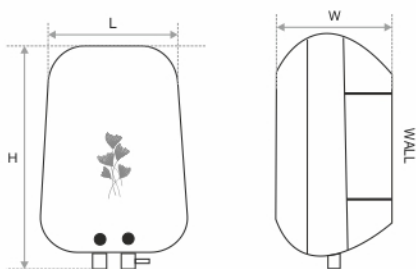
GALE



GALE series

Capacity	Model Code	Wattage	Dimensions (in mm)
3 LITRES	IWH-IG-1103	3000 W	225 x 195 x 375
3 LITRES	IWH-IG+-1203	3000 W	225 x 190 x 380

Heating : 3KW



SAFETY & KEY FEATURES



FUTURISTIC DESIGN

Futuristic & Compact designed by the design expert with superior quality



RUST PROOF ABS BODY

Rust proof body prevent corrosion ensures long life for water heater.



AUTOMATIC TEMPERATURE CONTROLLER

Thermostat ensure automatic temperature control & gives perfect hot water.



ANTI SYPHONING SYSTEM

Avoid back flow of hot water in cold water piping



POWERFULL HEATING ELEMENT

3 K.W. Powerful element for higher heating efficiency & longer life. It gives hot water 33% faster



SUITABLE FOR HIGH RISE BUILDING

Maximum Pressure rating is 6.5, which is suitable for high rise building.



ANTI RUST 304 TANK

High grade stainless steel tank is used in the water heater, which will provide protection to our geyser from rust for a long time.



GALE +

WARRANTY



On Inner Tank



On Product



www.grouplotus.co.in
www.koinsindia.com

Lotus has a policy of continuously improving its products and reserves the right to change materials and specifications without prior notice. Information here is current at the time of printing and is subject to change without notice. Kindly refer to company's policy document for warranty details.